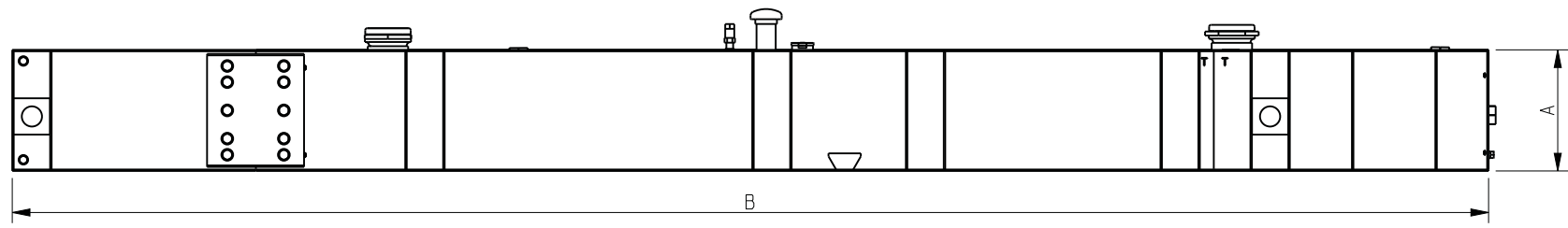
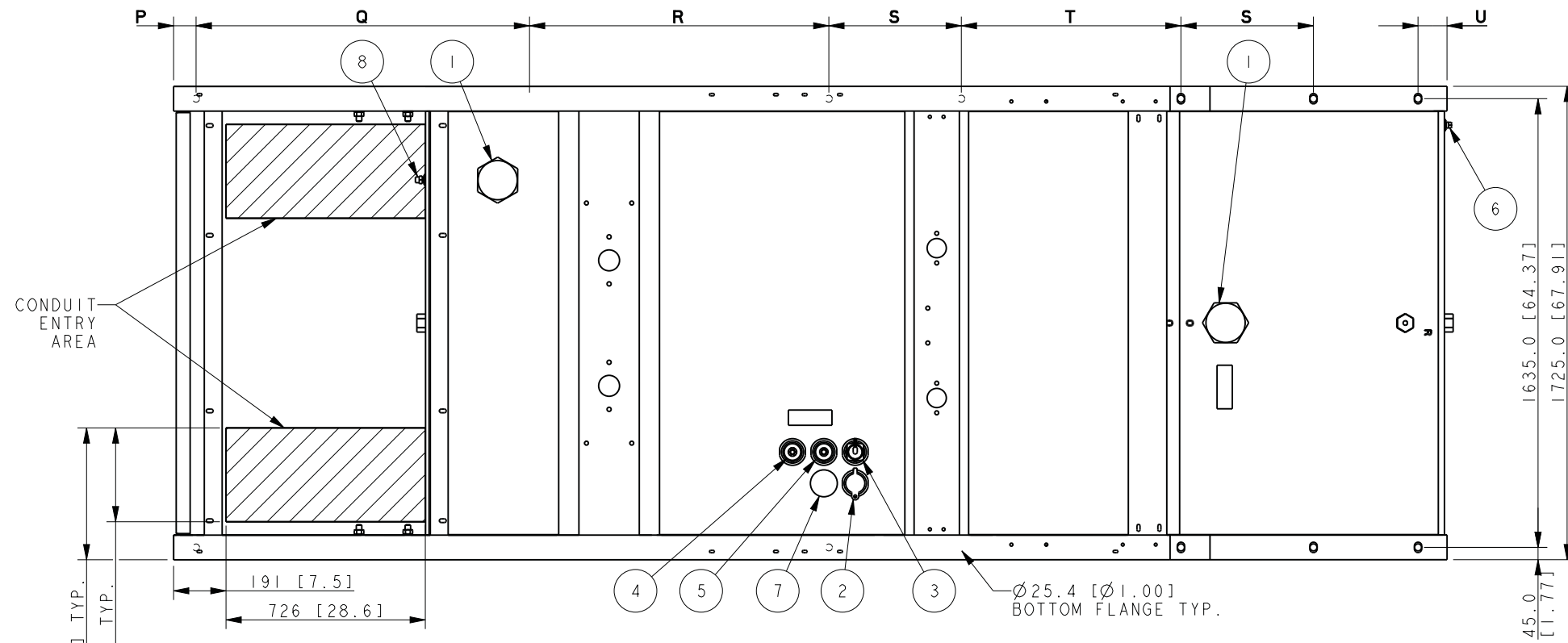


STANDARD TANK



1508 [398 GAL.] 12 HOUR TANK SHOWN.

ITEM	DESCRIPTION
8	SWITCH, FUEL IN BASIN
7	VENT, NORMAL
6	DRAIN, (1/2" NPT)
5	RETURN, FUEL (1/2" NPT)
4	SUPPLY, FUEL (1/2" NPT)
3	GAUGE, FUEL LEVEL, W/ SENDER
2	FILL CAP, 2" LOCKABLE W/PIPE RISER
1	CAP, EMERGENCY VENT

TANK INFORMATION												
LITERS [GALS]	MIN HOURS	GENSETS	TANK WEIGHT KG[LBS] NO FUEL	A	B	P	Q	R	S	T	U	
1508 [398]	12 HOURS	350-400KW	1070 [2442]	381.0 [15.0]	4639.1 [182.6]	81.9 [3.2]	1214.8 [47.8]	1090.4 [42.9]	482.6 [19.0]	800.0 [31.5]	105.6 [4.2]	
1734 [458]	12 HOURS	500KW	1153 [2543]	431.8 [17.0]								
2905 [767]	24 HOURS	350-400KW	1373 [3028]	660.4 [26.0]								
3347 [884]	24 HOURS	500KW	1477 [3257]	787.4 [31.0]								
4298 [1135]	36 HOURS	350-400KW	1620 [3571]	914.4 [36.0]	5236.0 [206.1]						702.5 [27.7]	
4975 [1314]	48/36 HOURS	350KW	1827 [4029]									5845.6 [230.1]
5767 [1523]	48/36 HOURS	400/500KW	2004 [4419]									6531.4 [257.1]
6659 [1759]	48 HOURS	500KW	2245 [4951]									

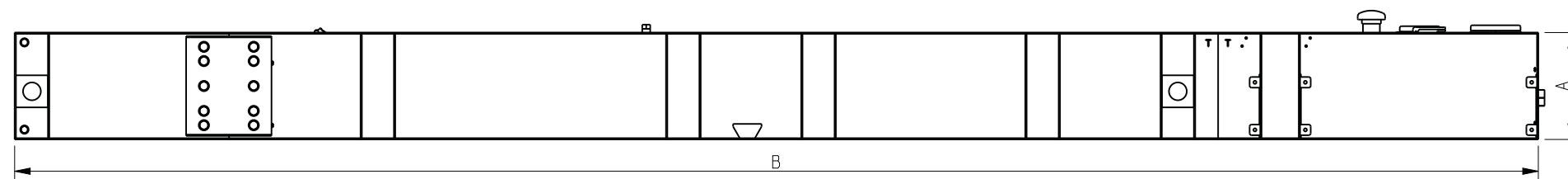
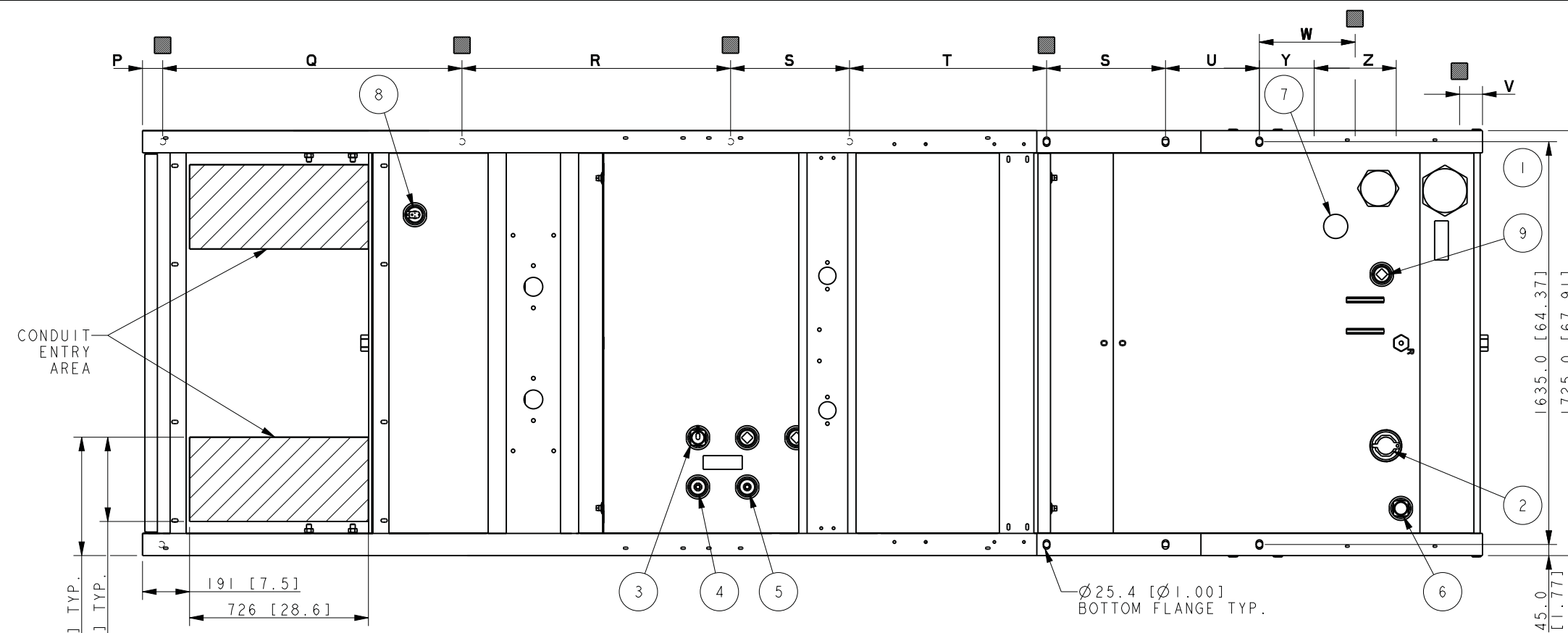
12 - 48 HOUR 350-500KW REOZJ OPEN GENSET & STANDARD TANKS

REV	DATE	ON COMPOSITE DWGS. SEE PART NO. FOR REVISION LEVEL	BY	UNLESS OTHERWISE SPECIFIED - 1) DIMENSIONS ARE IN MILLIMETERS 2) TOLERANCES ARE:
-	3-10-11	NEW DRAWING [90647-22]	JB2	X.XX ± 0.25
A	6-13-11	(A-7) 450KW REMOVED FROM GENSET COLUMN [91640]	DJV	X.X ± 1.0
B	12-8-11	SEE SHEET 2 [92430-5]	RJS	X ± 1.5
C	4-22-13	(A-7) TANK WGT ADDED. SEE SHEETS 2 & 3 [CT44620]	SAM	ANGLES ± 0° 30' MAX.
D	5-21-13	VIEWS UPDATED FOR E-VENT [CT47063]	SVP	THIRD ANGLE PROJECTION

APPROVALS	DATE
DRAWN JB2	3-10-11
CHECKED JB2	3-10-11
APPROVED AJD	3-10-11

KOHLER CO. METRIC PRO-E POWER SYSTEMS, KOHLER, WI 53044 U.S.A. THIS DRAWING IN DESIGN AND DETAIL IS KOHLER CO. PROPERTY AND MUST NOT BE USED EXCEPT IN CONNECTION WITH KOHLER CO. WORK. ALL RIGHTS OF DESIGN OR INVENTION ARE RESERVED.	
TITLE: DIMENSION PRINT, 350-500REOZJ TANKS	
SCALE 0.09	CAD NO. SHEET 1 of 3
DWG NO. ADV-8045	

STATE TANK



1532 [404 GAL.] 12 HOUR TANK SHOWN.

■ GROUND CLEARANCE I-BEAM MOUNTING HOLE ONLY

TANK INFORMATION

LITERS [GALS] MIN HRS	GENSETS	TANK WEIGHT KG [LBS] NO FUEL	A	B	P	Q	R	S	T	U	V	W	Y	Y
1532 [404] 12 HOURS STATE	350-400KW	1226 [2703]	381.0 [15.0]	5439.2 [214.1]	81.9 [3.2]	1214.8 [47.8]	1090.4 [42.9]	482.6 [19.0]	800.0 [31.5]	482.7 [19.0]	93.0 [3.7]	2222.8 [87.5]	891.5 [35.1]	904.2 [35.6]
1771 [468] 12 HOURS STATE	500KW	1301 [2869]	584.2 [23.0]											
2930 [774] 24 HOURS STATE	350-400KW	1502 [3311]	584.2 [23.0]	7242.6 [285.1]	81.9 [3.2]	1214.8 [47.8]	1090.4 [42.9]	482.6 [19.0]	800.0 [31.5]	482.7 [19.0]	93.0 [3.7]	2222.8 [87.5]	891.5 [35.1]	904.2 [35.6]
3385 [894] 24 HOURS STATE	500KW	1580 [3483]	660.4 [26.0]											
4395 [1161] 36 HOURS STATE	350-400KW	2026 [4466]	660.4 [26.0]	7242.6 [285.1]	81.9 [3.2]	1214.8 [47.8]	1090.4 [42.9]	482.6 [19.0]	800.0 [31.5]	482.7 [19.0]	93.0 [3.7]	2222.8 [87.5]	891.5 [35.1]	904.2 [35.6]
5046 [1333] 48/36 HRS STATE	350KW	2110 [4652]	711.2 [26.0]											
5767 [1523] 48/36 HRS STATE	400/500KW	2226 [4911]	812.8 [32.0]	914.4 [36.0]	81.9 [3.2]	1214.8 [47.8]	1090.4 [42.9]	482.6 [19.0]	800.0 [31.5]	482.7 [19.0]	93.0 [3.7]	2222.8 [87.5]	891.5 [35.1]	904.2 [35.6]
6675 [1763] 48 HRS STATE	500KW	2360 [5204]	914.4 [36.0]											

12 - 48 HOUR 350-500KW REOZJ OPEN GENSET & STATE TANKS

REV	DATE	ON COMPOSITE DWGS. SEE PART NO. FOR REVISION LEVEL	BY
-	3-10-11	NEW DRAWING [90647-22]	JB2
A	6-13-11	(A-7) 450KW REMOVED FROM GENSET COLUMN [91640]	DJV
B	12-8-11	(D-3,4) DIM U REVISED, DIM V,W,Y & Z ADDED [92430-5]	RJS
C	4-22-13	(A-7) TANK WGT ADDED, SEE SHEETS 1 & 3 [CT44620]	SAM
D	5-21-13	VIEWS UPDATED FOR E-VENT [CT47063]	SVP

ITEM	DESCRIPTION
9	PLUG, PIPE (2"NPT)
8	SWITCH, FUEL IN BASIN TOP MTD, 2"
7	VENT, NORMAL
6	GAUGE, FUEL LEVEL, DIRECT READ
5	RETURN, FUEL (1/2" NPT)
4	SUPPLY, FUEL (1/2" NPT)
3	GAUGE, FUEL LEVEL, W/ SENDER
2	FILL CAP, 2" LOCKABLE W/PIPE RISER
1	CAP, EMERGENCY VENT

UNLESS OTHERWISE SPECIFIED -
 1) DIMENSIONS ARE IN MILLIMETERS
 2) TOLERANCES ARE:
 X.XX ± 0.25
 X.X ± 1.0
 X ± 1.5
 ANGLES ± 0° 30' MAX.

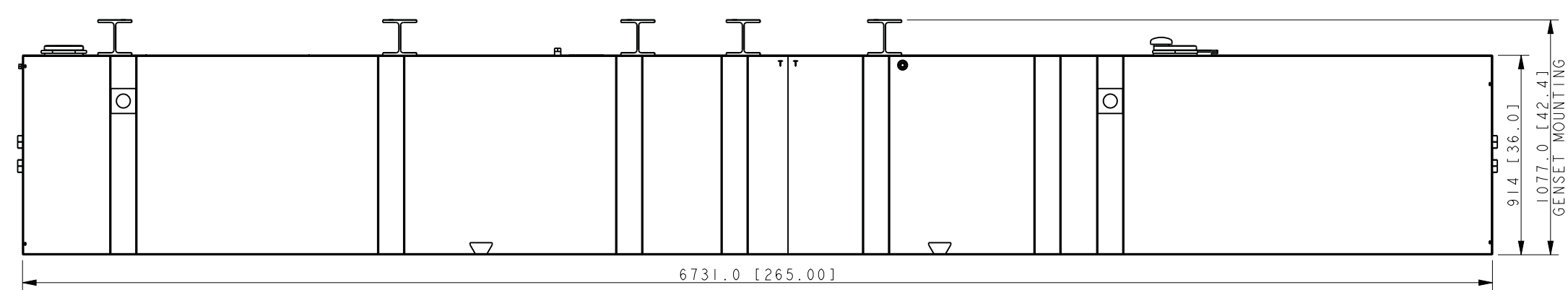
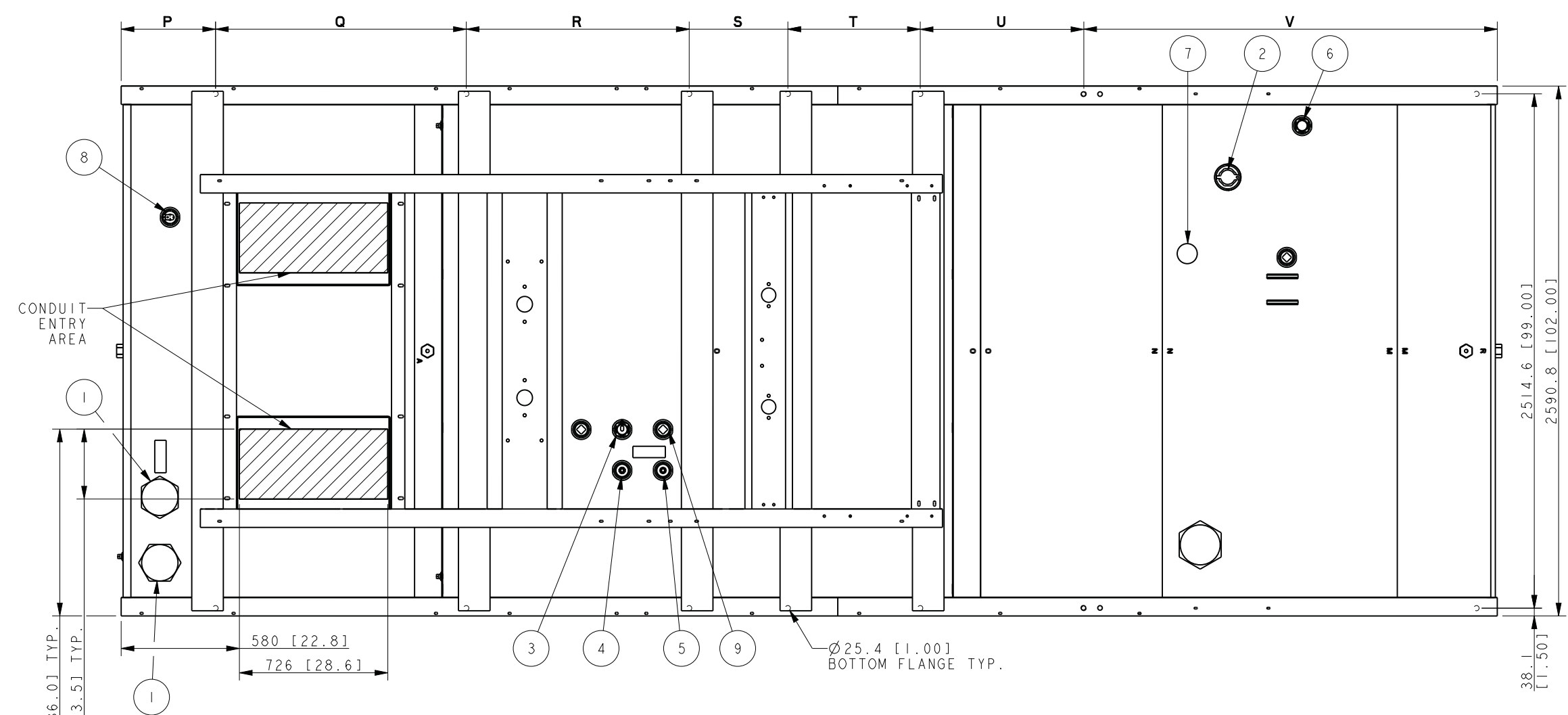
KOHLER CO. METRIC PRO-E
 POWER SYSTEMS, KOHLER, WI 53044 U.S.A.
 THIS DRAWING IN DESIGN AND DETAIL IS KOHLER CO. PROPERTY AND MUST NOT BE USED EXCEPT IN CONNECTION WITH KOHLER CO. WORK. ALL RIGHTS OF DESIGN OR INVENTION ARE RESERVED.

TITLE
 DIMENSION PRINT, 350-500REOZJ TANKS

APPROVALS: DATE
 DRAWN: JB2 3-10-11
 CHECKED: JB2 3-10-11
 APPROVED: AJD 3-10-11

SCALE: 0.09 CAD NO. SHEET 2 of 3
 DWG NO. **ADV-8045**

STATE TANK



ITEM	DESCRIPTION
9	PLUG, PIPE (2" NPT)
8	SWITCH, FUEL IN BASIN TOP MTD, 2"
7	VENT, NORMAL
6	GAUGE, FUEL LEVEL, DIRECT READ
5	RETURN, FUEL (1/2" NPT)
4	SUPPLY, FUEL (1/2" NPT)
3	GAUGE, FUEL LEVEL, W/ SENDER
2	FILL CAP, 2" LOCKABLE W/PIPE RISER
1	CAP, EMERGENCY VENT

72 HOUR 350-500KW REOZJ OPEN GENSET & STATE TANK

REV	DATE	ON COMPOSITE DWGS. SEE PART NO. FOR REVISION LEVEL	BY
-	3-10-11	NEW DRAWING [90647-22]	JB2
A	6-13-11	(A-7) 450KW REMOVED FROM GENSET COLUMN [91640]	DJV
B	12-8-11	VIEW GEOMETRY UPDATED, SEE SHEET 2 [92430-5]	RJS
C	4-22-13	(A-7) TANK WGT ADDED, SEE SHEETS 1 & 2 [CT44620]	SAM
D	5-21-13	VIEWS UPDATED FOR E-VENT [CT47063]	SVP

APPROVALS	DATE
DRAWN JB2	3-10-11
CHECKED JB2	3-10-11
APPROVED AJD	3-10-11

KOHLER CO. METRIC PRO-E
 POWER SYSTEMS, KOHLER, WI 53044 U.S.A.
 THIS DRAWING IN DESIGN AND DETAIL IS KOHLER CO. PROPERTY AND MUST NOT BE USED EXCEPT IN CONNECTION WITH KOHLER CO. WORK. ALL RIGHTS OF DESIGN OR INVENTION ARE RESERVED.

TITLE: **DIMENSION PRINT, 350-500REOZJ TANKS**
 SCALE: 1.00 CAD NO. SHEET 3 of 3
 DWG NO. **ADV-8045**

TANK INFORMATION										
LITERS [GALLONS] MIN HOURS	GENSETS	TANK WEIGHT KG [LBS] NO FUEL	P	Q	R	S	T	U	V	
10009 [2644] 72 HOURS STATE	350-400KW 500KW	3499 [7713]	461.6 [18.2]	1226.4 [48.3]	1090.4 [42.9]	482.6 [19.0]	647.6 [25.5]	800 [31.5]	2022.4 [79.6]	