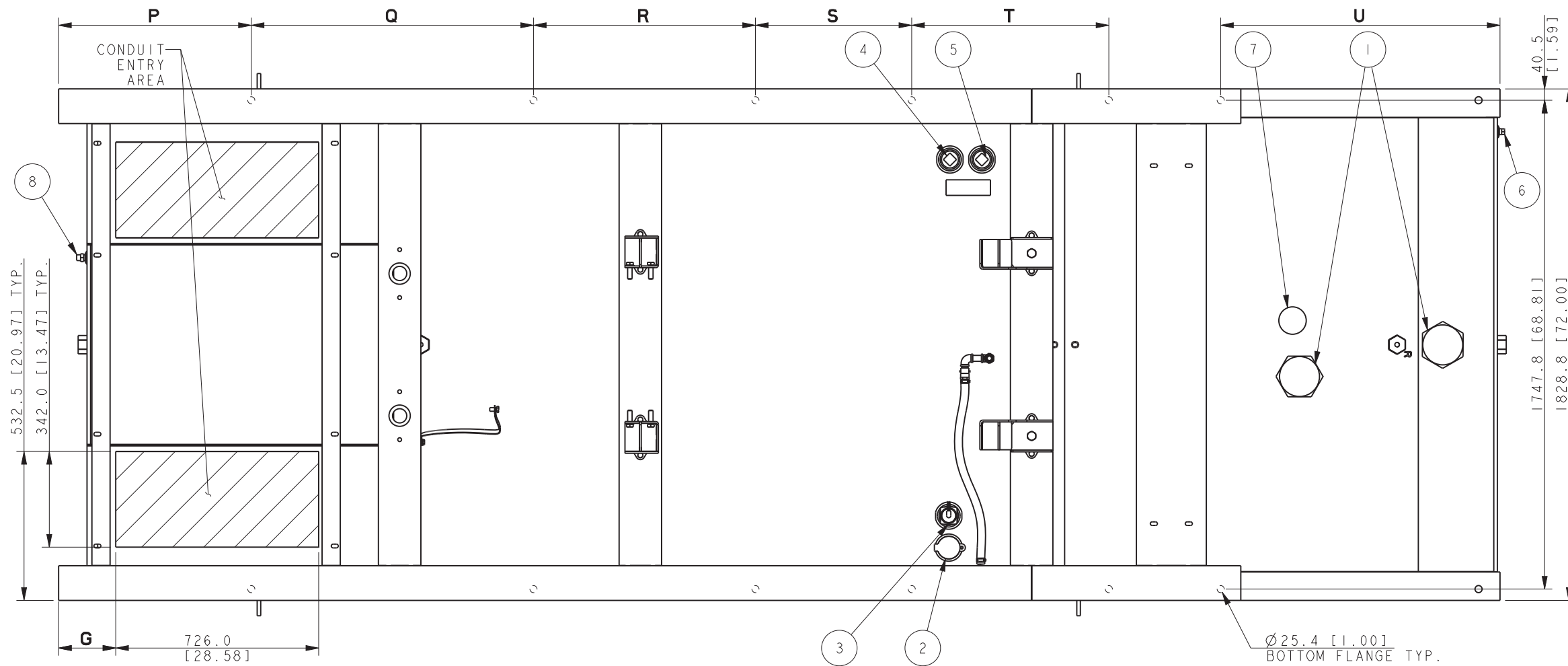


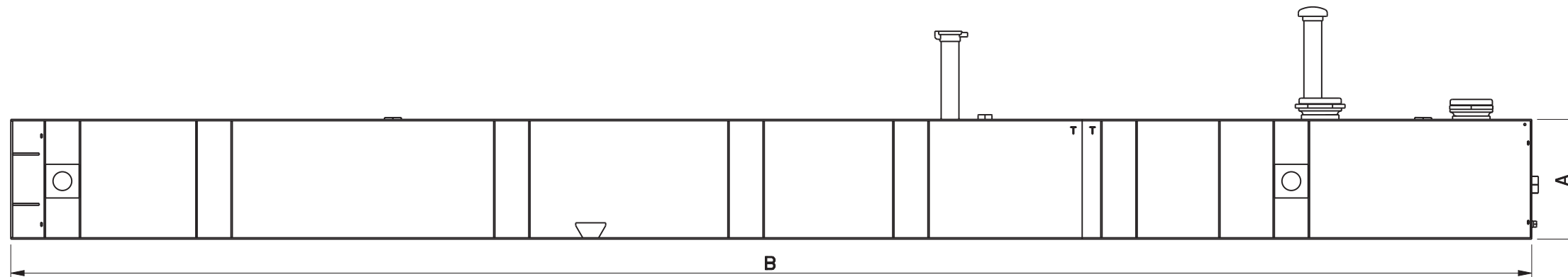
STANDARD TANK



40.5 [1.59]  
1747.8 [68.81]  
1828.8 [72.00]

532.5 [20.97] TYP.  
342.0 [13.47] TYP.

Ø25.4 [1.00]  
BOTTOM FLANGE TYP.



2049 L [541 GAL.] 12 HOUR TANK SHOWN.

LITERS [GALLONS] MIN HOURS	TANK INFORMATION									JUNCTION BOX				
	A	B	P	Q	R	S	T	U	WEIGHT KG [LBS]	G				
										500-550 KW	600 KW			
2049 [541] 12 HOURS	406.4 [16.0]	5162.2 [203.0]	689.2 [27.1]	1009.5 [39.7]	794.0 [31.3]	559.0 [22.0]	705.2 [27.8]	999.3 [39.3]	1372 [3024]	5M4024, 5M4027	5M4032	5M4030	5M4032	
3910 [1033] 24 HOURS	736.6 [29.0]									5M4028, 5M4030	5M4164	5M4272	5M4164	5M4276
5730 [1513] 36 HOURS	914.4 [36.0]	5740.4 [226.0]						1583.5 [62.3]	2058 [4537]	452.3 [17.8]	287.2 [11.3]	285.2 [11.2]	120.1 [4.7]	
7645 [2019] 48 HOURS		7137.4 [281.0]						2980.5 [117.3]	2522 [5560]					

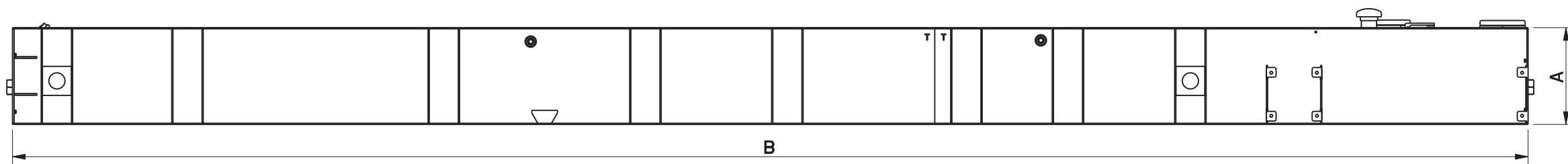
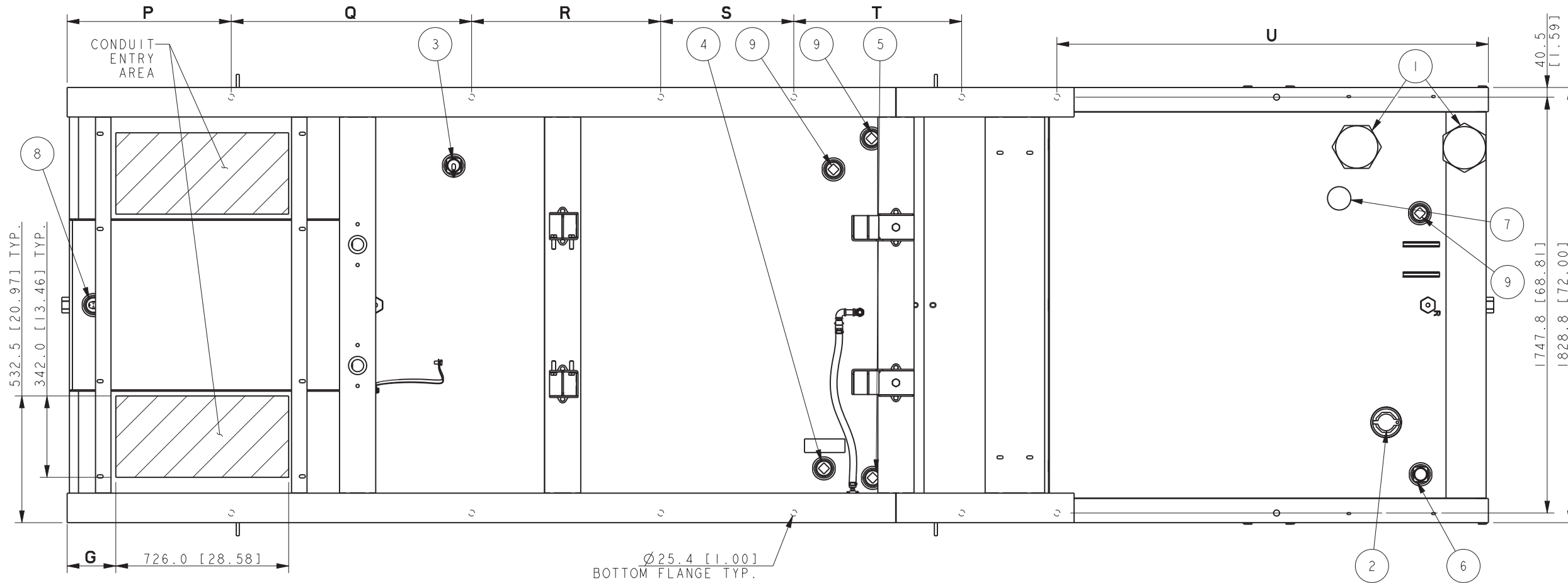
12 - 48 HOUR 500-600KW REOZVB/C  
OPEN GENSET & STANDARD TANKS

REV	DATE	ON COMPOSITE DWGS. SEE PART NO. FOR REVISION LEVEL	BY
-	6-27-11	NEW DRAWING [91023-12]	JB2
A	3-20-12	(A-1) SEE SHEET 2-3 [CT08748]	DJV

ITEM	DESCRIPTION
8	SWITCH, FUEL IN BASIN
7	VENT, NORMAL
6	DRAIN, (1/2" NPT)
5	RETURN, FUEL
4	SUPPLY, FUEL
3	GAUGE, FUEL LEVEL, W/ SENDER
2	FILL CAP, 2" LOCKABLE W/PIPE RISER
1	CAP, EMERGENCY VENT

**KOHLER CO.** METRIC PRO-E  
POWER SYSTEMS, KOHLER, WI 53044 U.S.A.  
THIS DRAWING IN DESIGN AND DETAIL IS KOHLER CO. PROPERTY AND MUST NOT BE USED EXCEPT IN CONNECTION WITH KOHLER CO. WORK. ALL RIGHTS OF DESIGN OR INVENTION ARE RESERVED.

TITLE: DIMENSION PRINT, 500-600REOZVB/C TANKS  
SCALE: 1.00 CAD NO. SHEET 1 of 3  
DWG NO. ADV-8419



2039 L [538 GAL.] 12 HOUR TANK SHOWN.

REFER TO SEISMIC ADV FOR IBC/OSHPD SEISMIC MOUNTING LOCATIONS

LITERS [GALLONS] MIN HOURS	TANK INFORMATION								WEIGHT KG [LBS]	JUNCTION BOX						
	A	B	P	Q	R	S	T	U		G		500-550 KW		600 KW		
										5M4024, 5M4027 5M4028, 5M4030 5M4162, 5M4270 5M4272	5M4032 5M4164	5M4030 5M4272	5M4032 5M4164 5M4276			
2039 [538] 12 HOURS	381.0 [15.0]								1523 [3357]							
3930 [1038] 24 HOURS	660.4 [26.0]	5969.0 [235.0]						1812.1 [71.3]	1785 [3935]	452.3 [17.8]	287.2 [11.3]	285.2 [11.2]	120.1 [4.7]			
5757 [1520] 36 HOURS	914.4 [36.0]							3412.3 [134.3]	2034 [4484]							
7658 [2023] 48 HOURS		7569.2 [298.0]	689.2 [27.1]	1009.5 [39.7]	794.0 [31.3]	559.0 [22.0]	705.2 [27.8]		2536 [5592]							

12 - 48 HOUR 500-600KW REOZVB/C OPEN GENSET & STATE TANKS

REV	DATE	ON COMPOSITE DWGS. SEE PART NO. FOR REVISION LEVEL	BY
-	6-27-11	NEW DRAWING [91023-12]	JB2
A	3-20-12	(A-1) SEISMIC NOTE ADDED [CT08748]	DJV

ITEM	DESCRIPTION
9	PLUG, PIPE (2" NPT)
8	SWITCH, FUEL IN BASIN TOP MTD, 2"
7	VENT, NORMAL
6	GAUGE, FUEL LEVEL, DIRECT READ
5	RETURN, FUEL
4	SUPPLY, FUEL
3	GAUGE, FUEL LEVEL, W/ SENDER
2	FILL CAP, 2" LOCKABLE W/PIPE RISER
1	CAP, EMERGENCY VENT

UNLESS OTHERWISE SPECIFIED -  
1) DIMENSIONS ARE IN MILLIMETERS  
2) TOLERANCES ARE:  
X.XX ±  
X.X ±  
X ±  
ANGLES ±

THIRD ANGLE PROJECTION

APPROVALS: DATE: SURFACE FINISH: MAX.

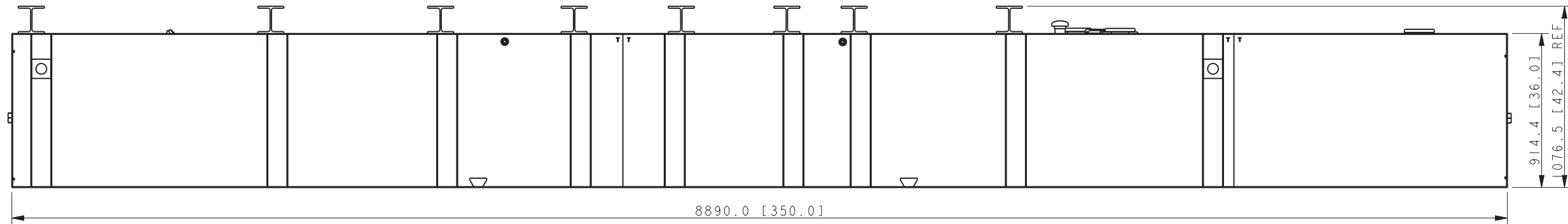
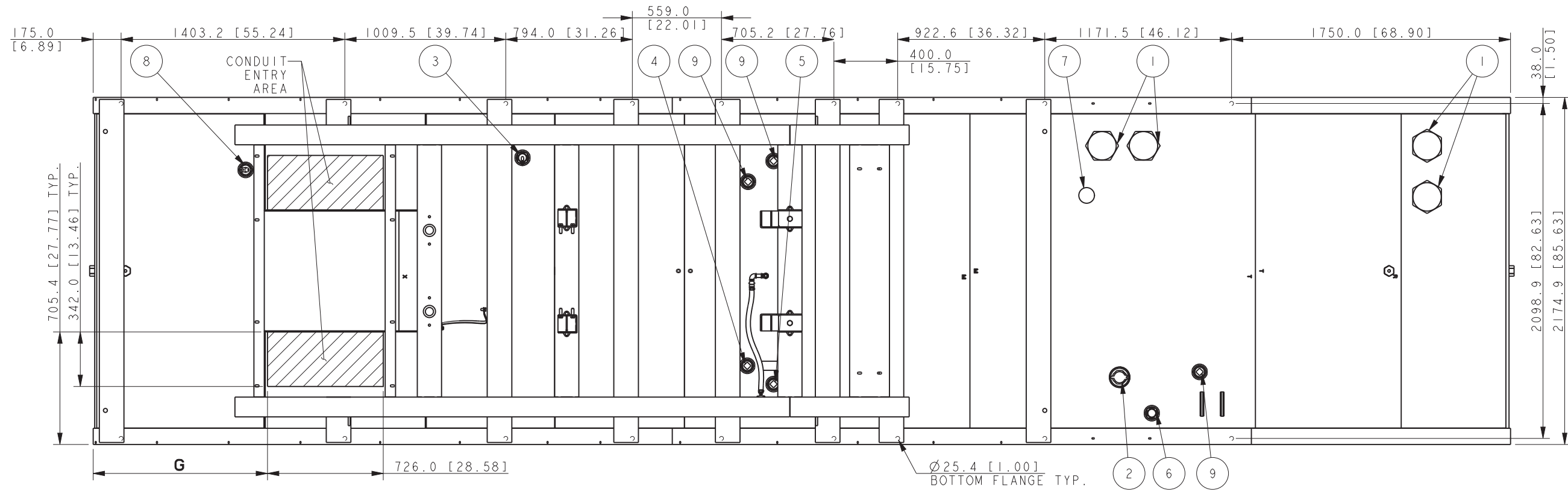
**KOHLER CO. METRIC PRO-E**  
POWER SYSTEMS, KOHLER, WI 53044 U.S.A.  
THIS DRAWING IN DESIGN AND DETAIL IS KOHLER CO. PROPERTY AND MUST NOT BE USED EXCEPT IN CONNECTION WITH KOHLER CO. WORK. ALL RIGHTS OF DESIGN OR INVENTION ARE RESERVED.

TITLE: **DIMENSION PRINT, 500-600REOZVB/C TANKS**

SCALE: 0.11 CAD NO. SHEET 2 of 3

DWG NO. **ADV-8419**

STATE TANK



11554 L [3052 GAL.] 72 HOUR TANK SHOWN.  
WEIGHT: 4118 [9079]

REFER TO SEISMIC ADV FOR IBC/OSHPD SEISMIC MOUNTING LOCATIONS

JUNCTION BOX			
G			
500-550 KW		600 KW	
5M4024, 5M4027, 5M4028, 5M4030, 5M4162, 5M4270, 5M4272	5M4032, 5M4164	5M4030, 5M4272	5M4032, 5M4164, 5M4276
1341.1 [52.8]	1176.0 [46.3]	1173.5 [46.2]	1008.4 [39.7]

ITEM	DESCRIPTION
9	PLUG, PIPE (2" NPT)
8	SWITCH, FUEL IN BASIN TOP MTD, 2"
7	VENT, NORMAL
6	GAUGE, FUEL LEVEL, DIRECT READ
5	RETURN, FUEL
4	SUPPLY, FUEL
3	GAUGE, FUEL LEVEL, W/ SENDER
2	FILL CAP, 2" LOCKABLE W/PIPE RISER
1	CAP, EMERGENCY VENT

72 HOUR 500-600KW REOZVB/C OPEN GENSET & STATE TANK

REV	DATE	ON COMPOSITE DWGS. SEE PART NO. FOR REVISION LEVEL	BY
-	6-27-11	NEW DRAWING [91023-12]	JB2
A	3-20-12	(A-1) SEISMIC NOTE ADDED [CT08748]	DJV

UNLESS OTHERWISE SPECIFIED -	METRIC	PRO-E
1) DIMENSIONS ARE IN MILLIMETERS		
2) TOLERANCES ARE:		
X.XX ±		
X.X ±		
ANGLES ±		
THIRD ANGLE PROJECTION		
APPROVALS	DATE	
DRAWN JB2	6-27-11	
CHECKED JB2	6-27-11	
APPROVED AJD	6-27-11	

<b>KOHLER CO.</b>		TITLE
POWER SYSTEMS, KOHLER, WI 53044 U.S.A.		DIMENSION PRINT, 500-600REOZVB/C TANKS
THIS DRAWING IN DESIGN AND DETAIL IS KOHLER CO. PROPERTY AND MUST NOT BE USED EXCEPT IN CONNECTION WITH KOHLER CO. WORK. ALL RIGHTS OF DESIGN OR INVENTION ARE RESERVED.		SCALE 0.10 CAD NO. SHEET 3 of 3
DWG NO. ADV-8419		D