



Product Overview

LithTech's Energy Storage Systems offer some of the best energy density on the market, while upholding the highest safety standards and energy efficiency.

Product Features Include:

- -22 °~ 140°F ultra-wide operating temperature
- Energy Efficiency is higher than 95%
- Energy density >160kWh/kg
- Cycle life > 10000cls
- Prismatic cell | LFP Chemistry
- Liquid cooled module

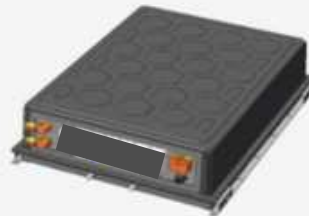
Safety tested:

- Nail Penetration
- Crush Test
- No Thermal Runway
- No Explosion Risk

Key Features

- Liquid cooled prismatic LFP Cells
- All Industry Standard Certifications: UL9540
- Offers a long lifecycle with high energy efficiency which prolongs the lifecycle of the energy storage system.
- Our system is designed to be inherently safe.
- Our manufacturing process provides strict quality control.

Battery Energy Storage System (ESS)



Liquid Cooled Module

LithTech offers a one-stop shop with services and support designed to create the highest value to the customer.

Lithtech.com (833) 546-4832

Parameter	Specifications		Notes	
Cell Capacity	280AH	300Ah	@77° F, 0.5P	
Configuration	10P384S			
Nominal Voltage	1228.8V			
Nominal Voltage Range	960 ~ 1401.6V			
Nominal Energy	3440kWh	3686kWh	@77° F, 0.5P	
Rated Charge/Discharge Ratio	0.5P/0.5P			
Dimension (L*W*H)	19.87*7.99*9.5 Ft.			
Weight	<35t			
Cooling mode	Liquid Cooling			
Coolant	50% water 50% Glycol Mixed Liquid			
IP Level	IP54		Communication Method	Ethernet
Energy Cycle Efficiency	<u>></u> 94%			
Altitude	<u><</u> 13,000 Feet			